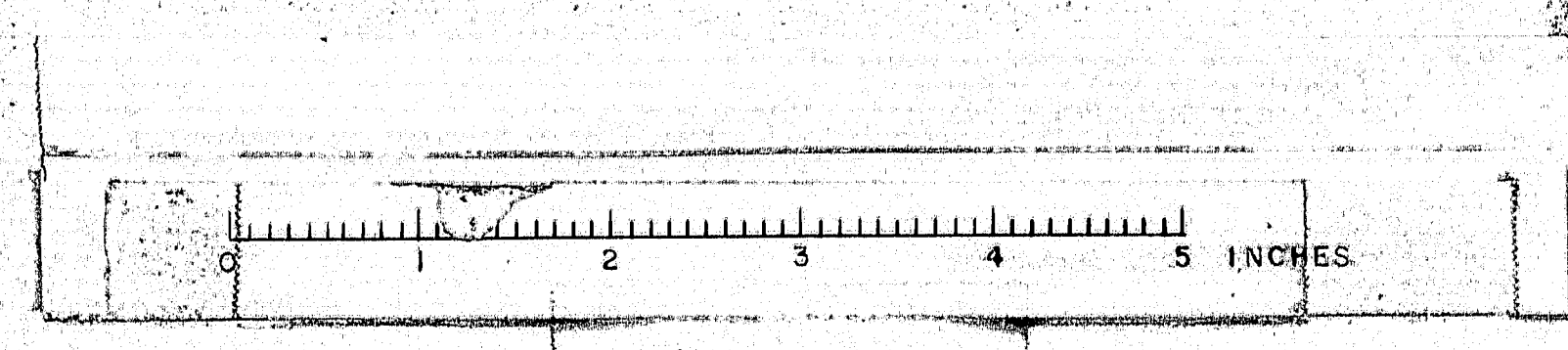
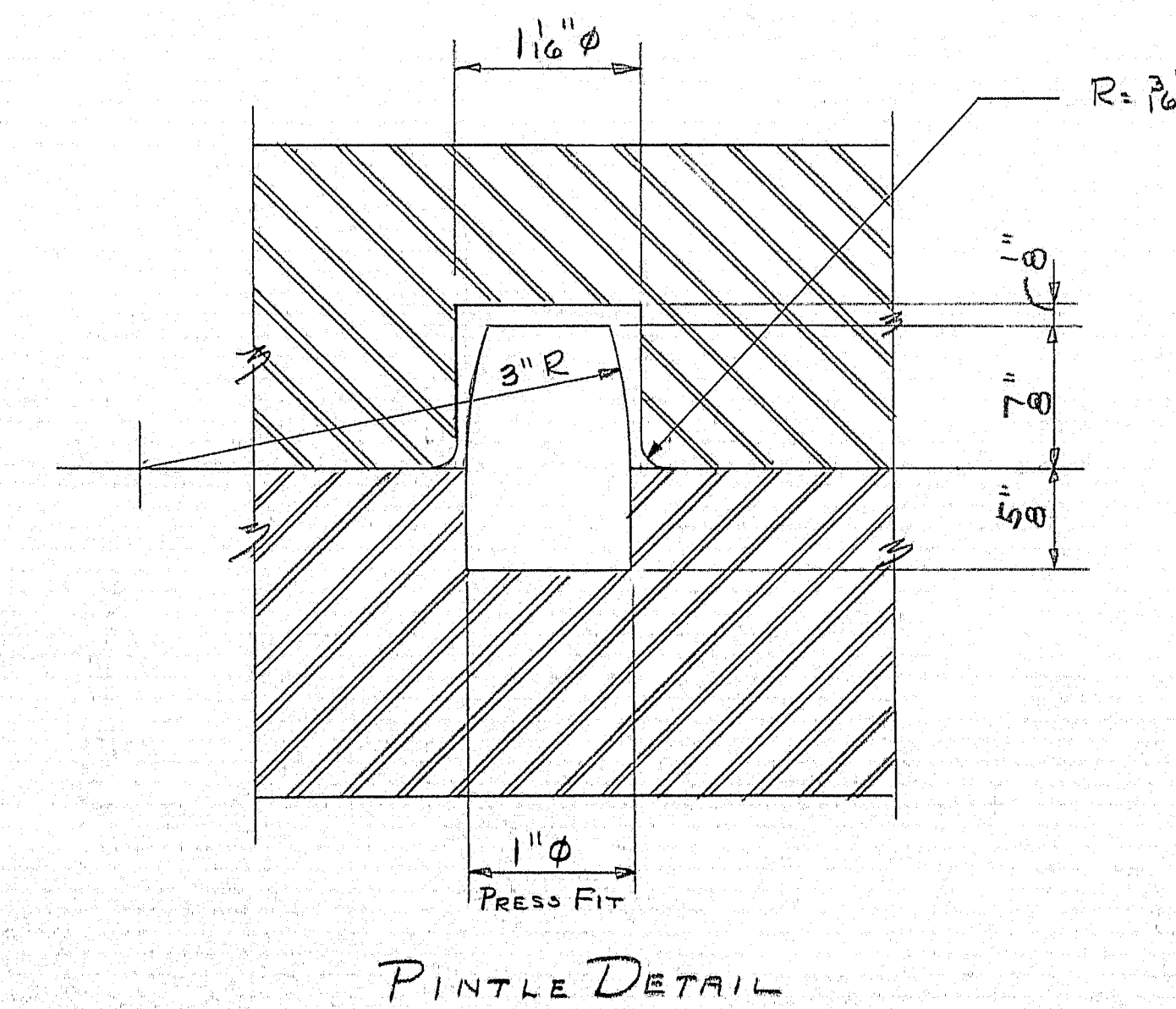
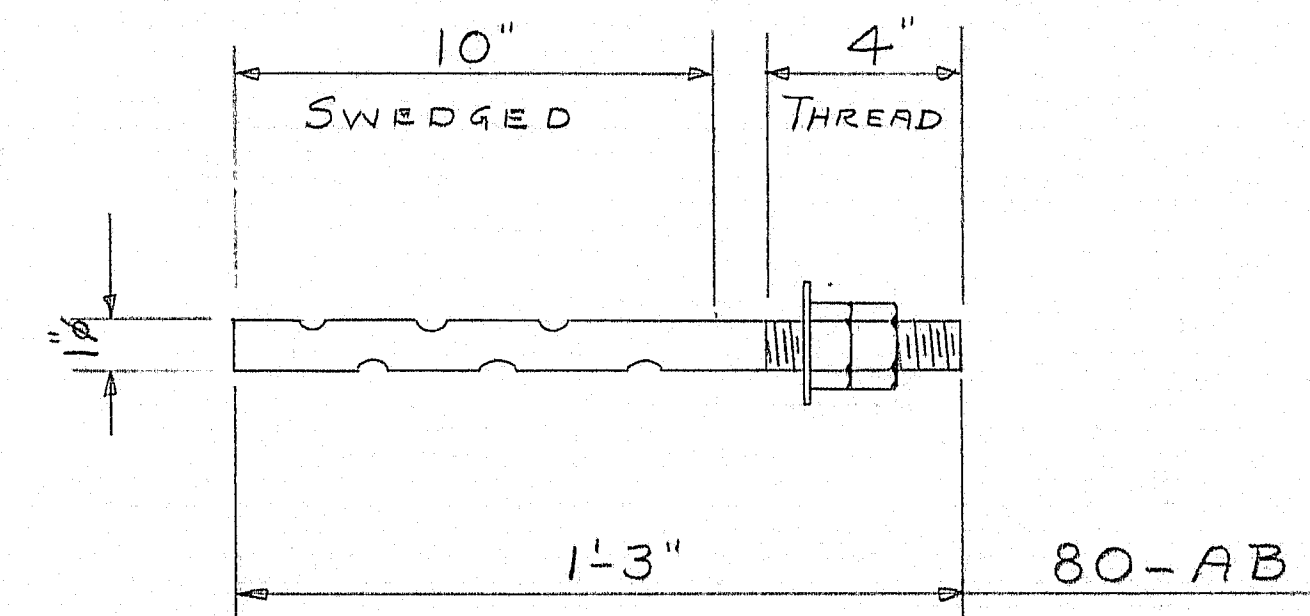
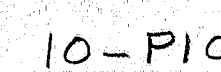
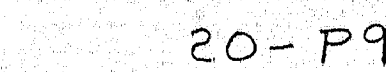
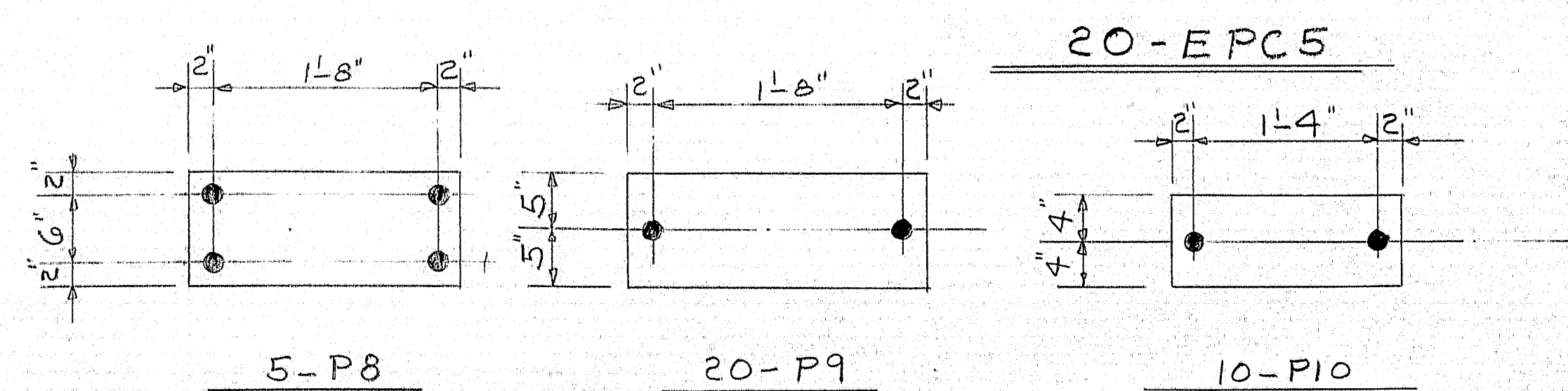
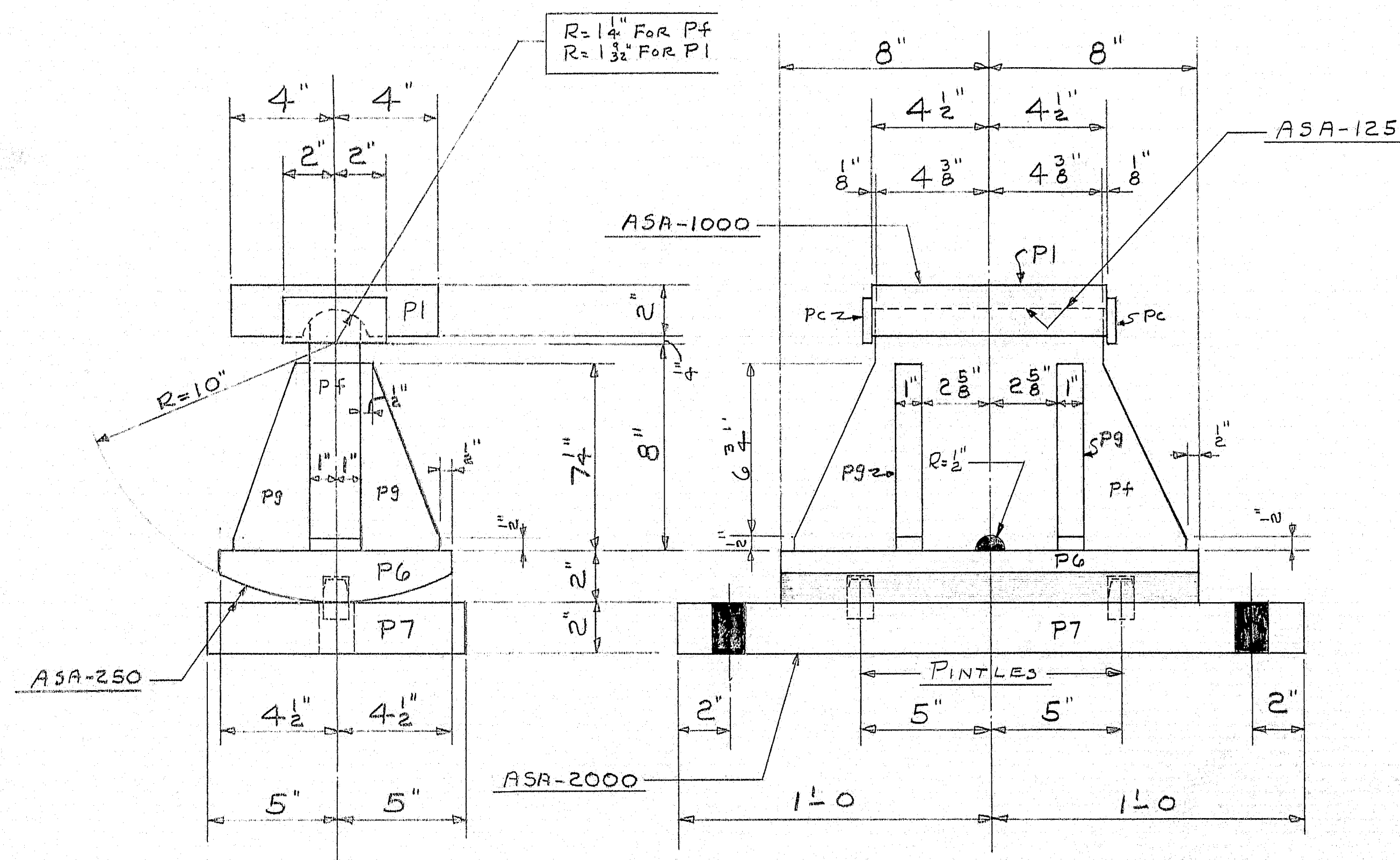
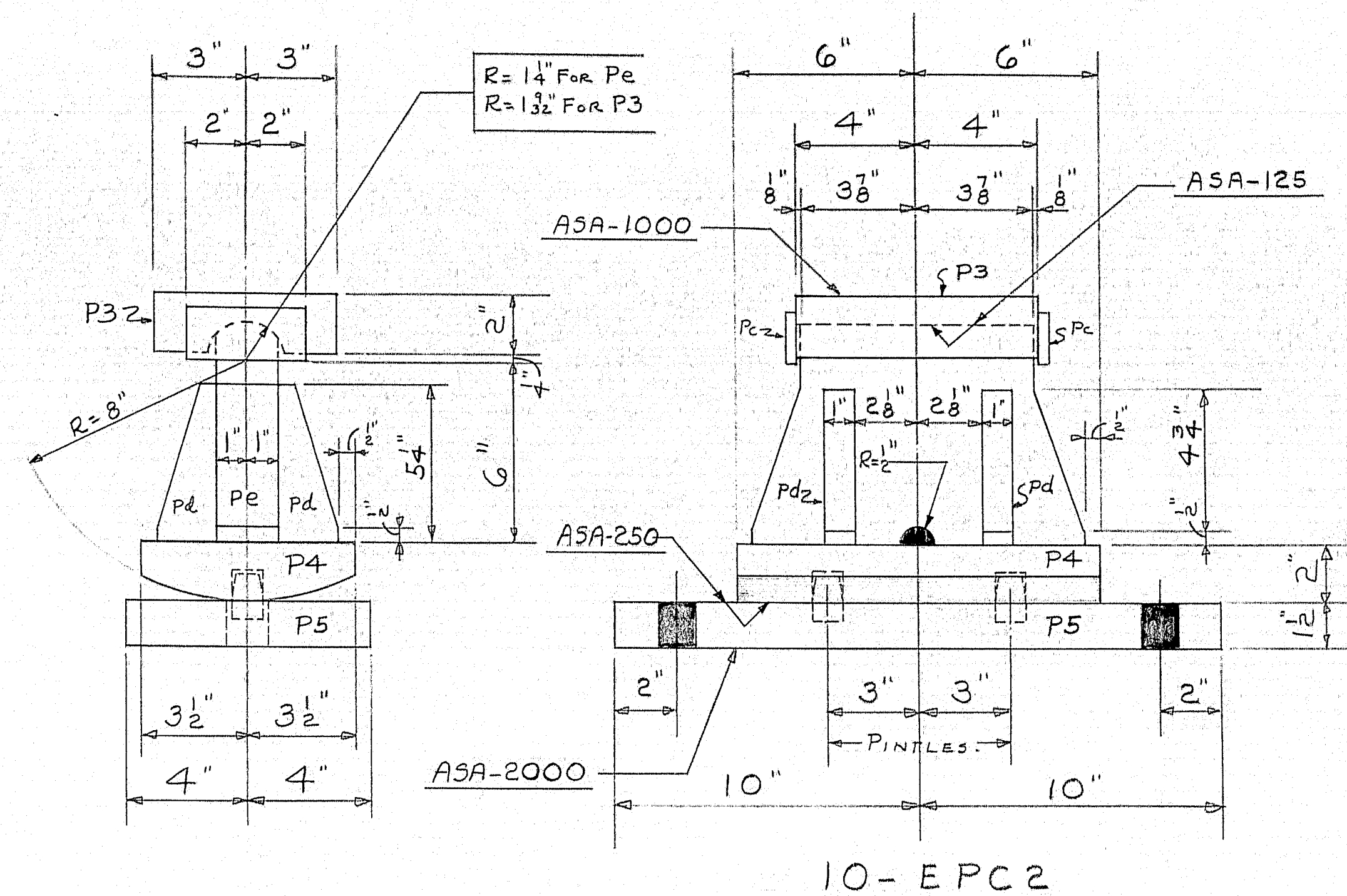
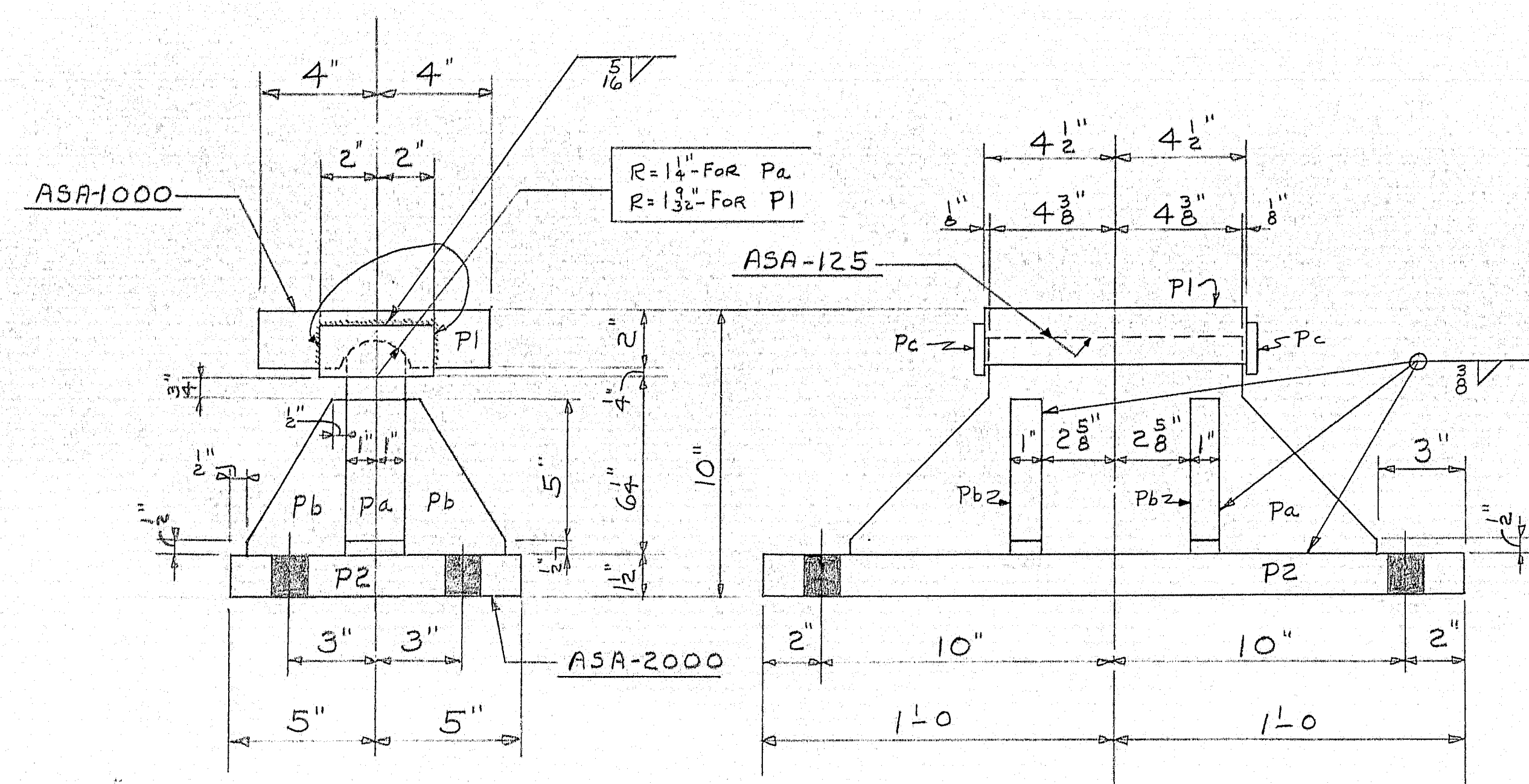


SHOP CONNECTIONS: WELD
 FIELD CONNECTIONS:
 HOLES:
 PAINT: STATE OF MAINE SPEC'S.

FRAMING PLAN			<i>Bancroft & Martin Rolling Mills Company</i> <i>Brewer, Maine</i>
PRINT ISSUE			
			RT. 43 BRIDGE OVER I 95 OLD TOWN MAINE
2	S.H.C.	9-19-69	
3	Dist.	9-19-64	
1	Shop	9-19-64	
2	F.A.	9-3-64	
DRAWN 8-27-64 D.C.			CUSTOMER CIANCHETTE BROS. INC. DESIGNER STATE HIGHWAY COMM.
REVISION			
REVISION			
REVISION			
ORDER VERBAL			DWG. B64-218-E1

95-21



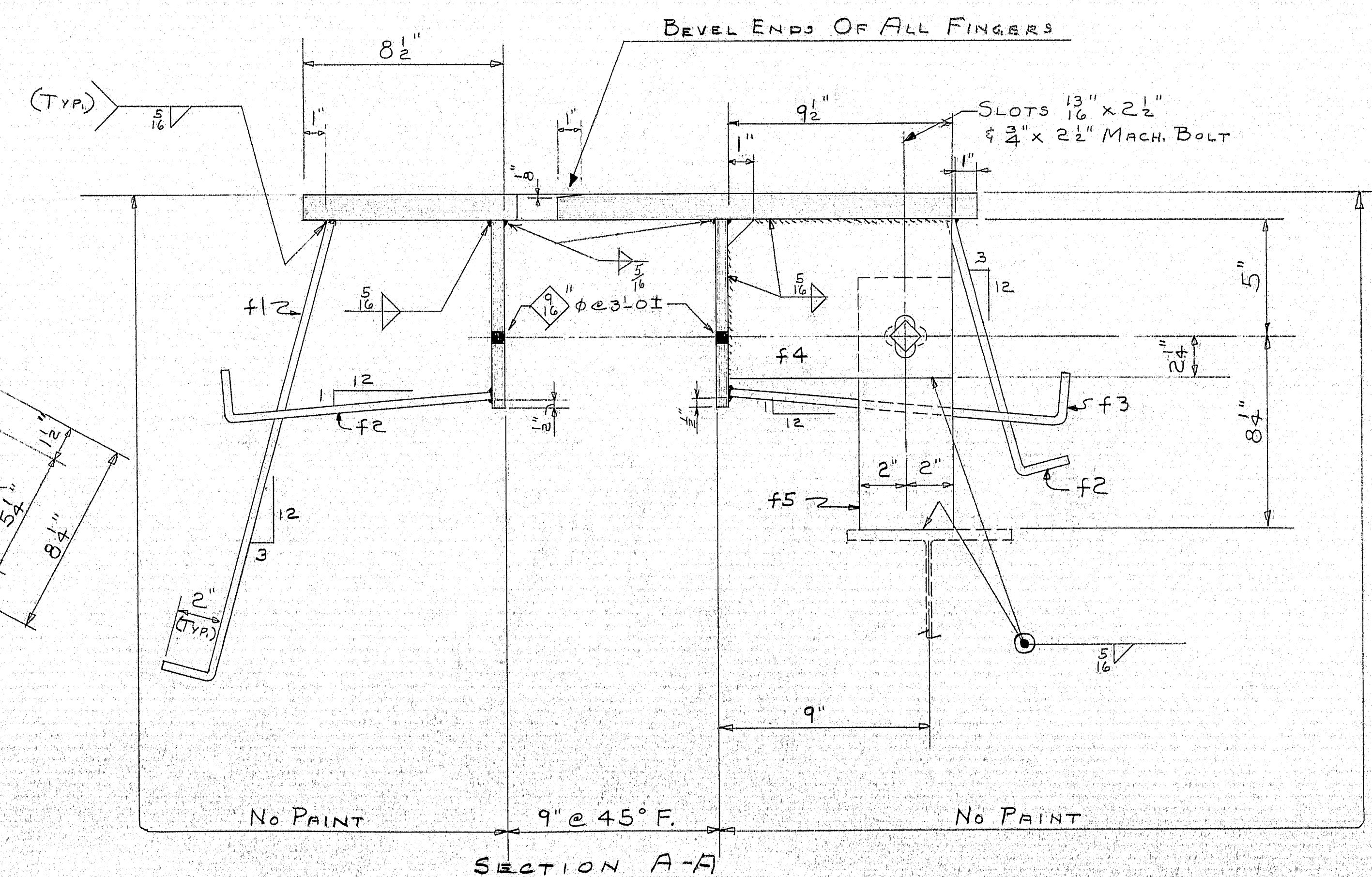
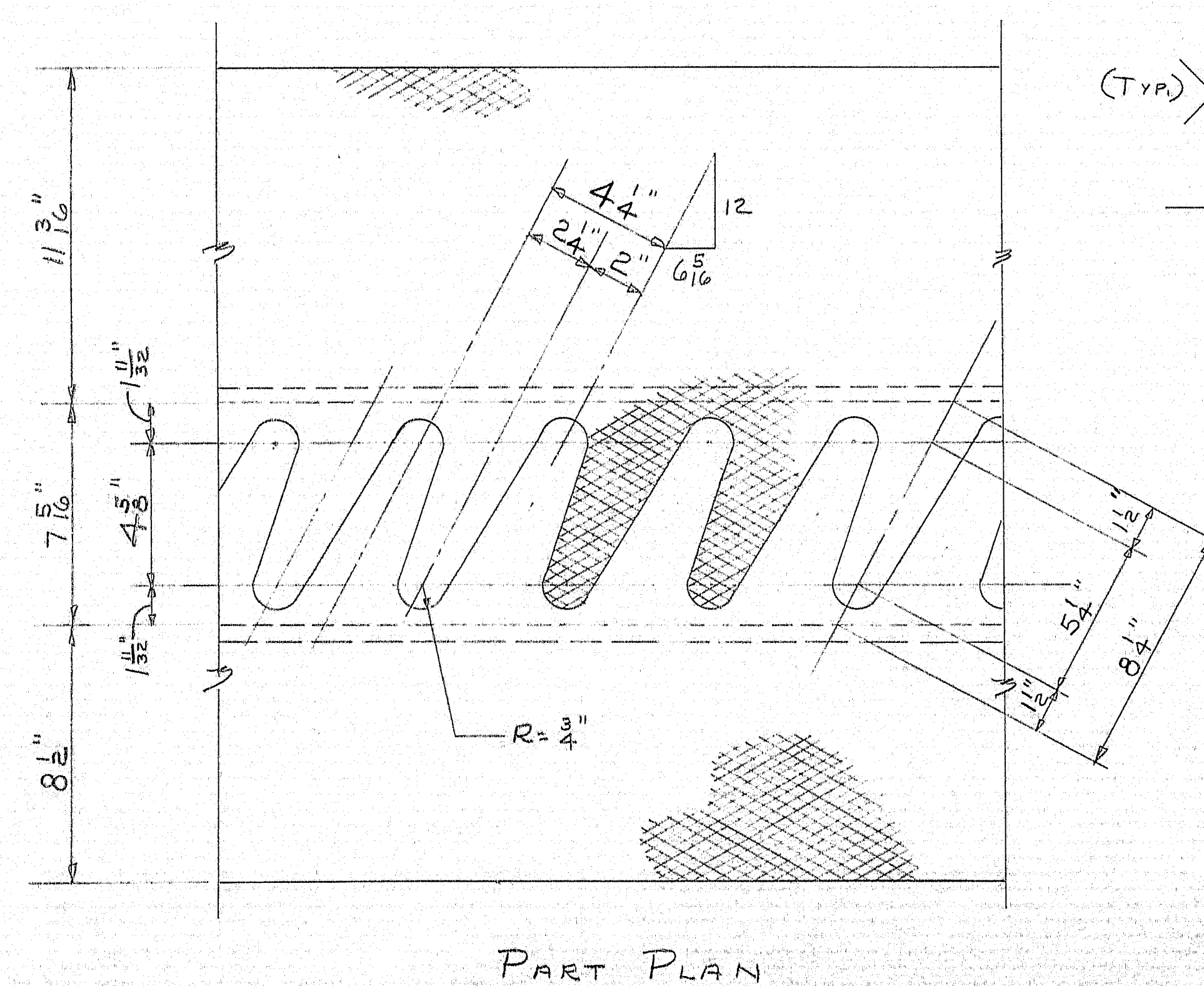
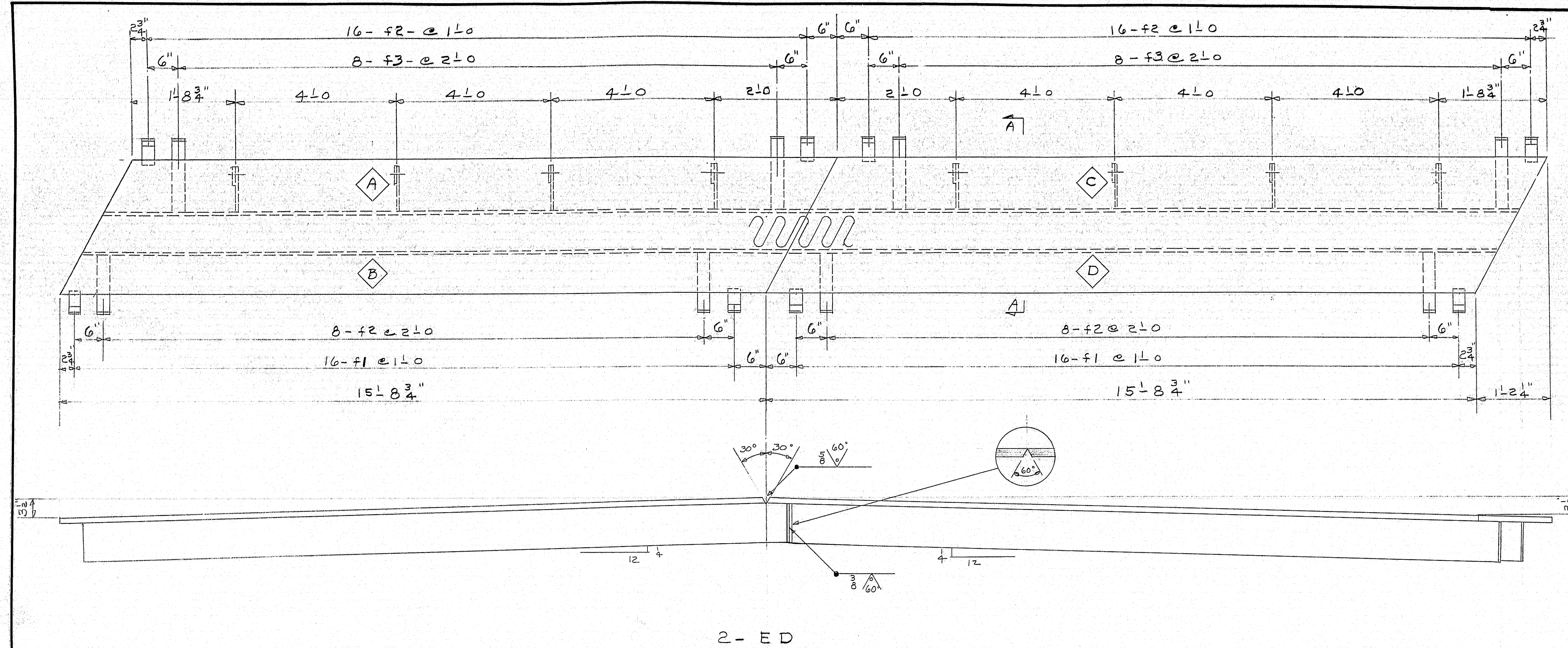


SHIP		BILL OF MATERIAL			DWG. B64-218-51	
MARK	NO.	MARK	SHAPE	LENGTH	WT.	REMARKS
P1	25		R 8 x 2	0 9		ASTM-A36
P3	10		R 6 x 2	0 8		
P4	10		R 7 x 2	1 0		
P6	20		R 9 x 2	1 4		
P7	20		R 10 x 2	2 0		
P2	5		R 10 x 1 1/2	2 0		
P5	10		R 8 x 1 1/2	1 8		
	5	Pa	R 7 1/2 x 2	1 6		
	10	Pe	R 7 1/4 x 2	0 11		
	20	Pf	R 9 1/4 x 2	1 3		
	20	Pb	R 3 1/2 x 1	0 5 1/2		
	40	Pd	R 2 x 1	0 5 1/2		
	80	Pg	R 3 x 1	0 7 1/4		
	70	Pc	R 1 3/4 x 3/8	0 4		
	60	PINTLE	1" ROD	0 1 1/2		
AB	80		1" ROD	1 3		
	160		1" NUTS			Hex
	80		1" WASHERS			2 1/2" DIA. 1 1/6" HOLE
P8	5		10" x 6"	2 0		
P9	20		D.	2 0		
P10	10		8" x 6"	1 8		

SHOP CONNECTIONS: WELD (E70-LOW HYDROGEN)
FIELD CONNECTIONS: WELD
HOLES: $1\frac{3}{8}" \phi$
PAINT: STATE OF MAINE SPEC'S.

APPL'D AS NOTED 7-23-64

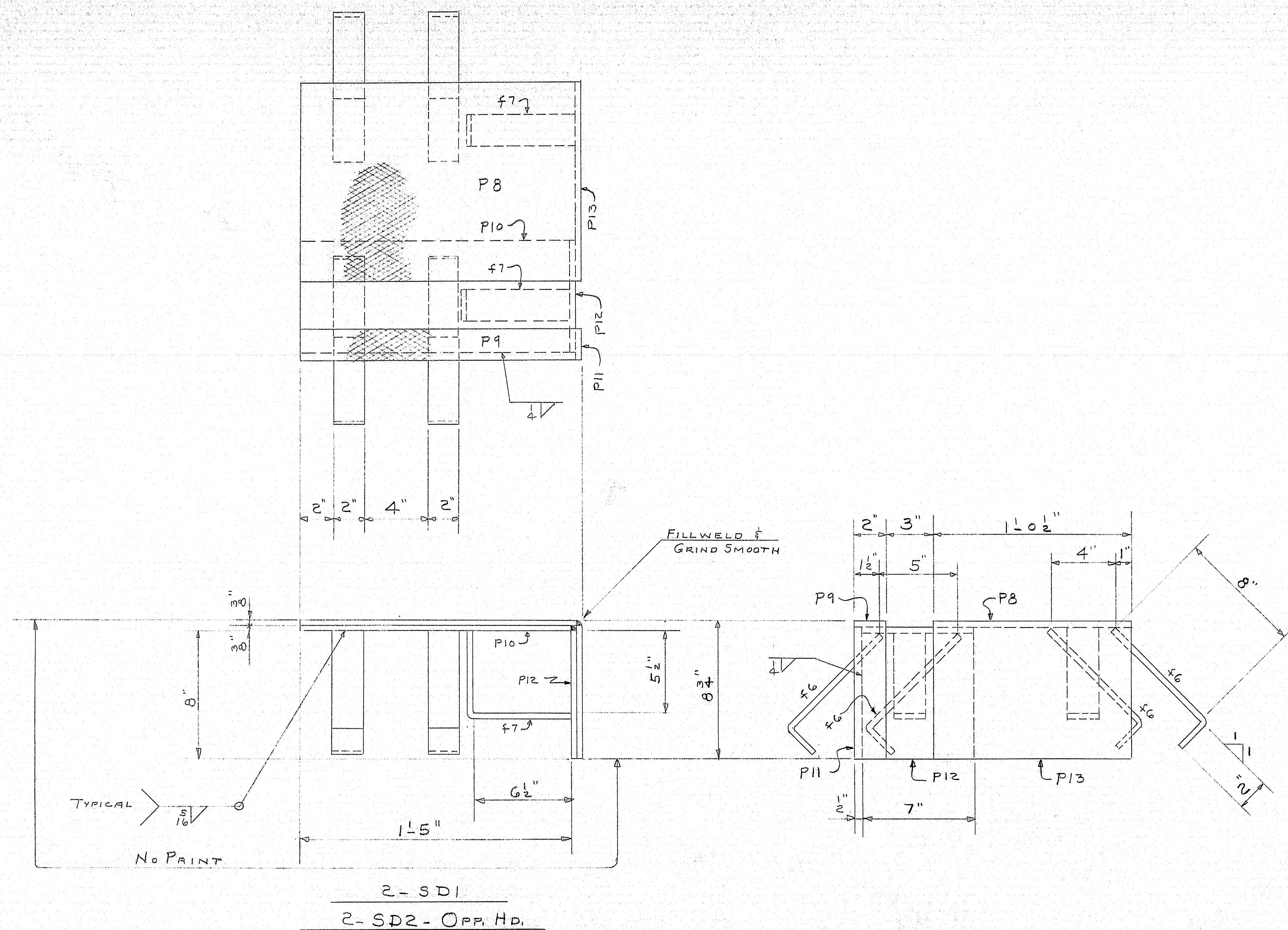
BEARING DEVICES			<i>Bancroft & Martin Inc.</i> <i>Brewer, Maine</i>	
PRINT ISSUE			RTE. 43 BRIDGE OVER INT. #95 OLD TOWN MAINE	
2	S.H.C.	9-19-64	CUSTOMER <u>CIANCHETTE BROS. INC.</u> DESIGNER <u>STATE HIGHWAY COMM.</u>	
3	CUST	8-11-64		
4	PORT	7-30-64		
2	F.A.	7-22-64		
DRAWN 7-13-64 D.C.			ORDER <u>VERBAL</u>	
REVISION			DWG. <u>BG4-218-S1</u>	
REVISION				
REVISION				

[illegible]

SHOP CONNECTIONS: WELD C E 70 LOW HYDROGEN
FIELD CONNECTIONS: WELD
HOLES: AS NOTED
PAINT: STATE OF MAINE SPEC'S

APPL'D AS NOTED 7-23-64

EXPANSION DAMS			
PRINT ISSUE			
			<i>Bancroft & Martin Inc.</i> <i>Brewer, Maine</i>
2	S.H.C.	9-19-64	RTE. 43 BRIDGE OVER INT. #95 OLD TOWN MAINE
5	SHOP	7-30-64	
2	F.A.	7-22-64	
DRAWN 7-18-64		DIC.	CUSTOMER <u>CLANCHETTE BROS. INC.</u> DESIGNER <u>STATE HIGHWAY COMM.</u> ORDER <u>VERBAL</u> DWG. <u>B64-218-52</u>
REVISION			
REVISION			
REVISION			



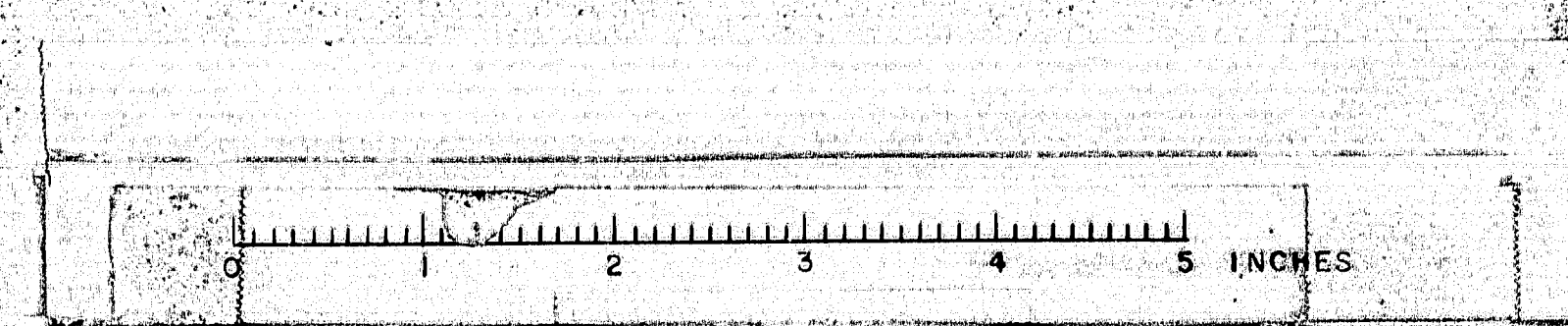
SHIP		BILL OF MATERIAL				DWG. B64-218-53	
MARK	NO.	MARK	SHAPE	LENGTH	WT.	REMARKS	
SD1	2		SIDEWALK DAMS				
SD2	2		D.				
	4	P8	R 12x3/8	1 5/8		CHK'D R	A36
	4	P9	R 2x3/8	1 5/8		D.	
	4	P10	R 7x3/8	1 5/8			
	4	P11	R 2x3/8	0 8/8			
	4	P12	R 7x3/8	0 8/8			
	4	P13	R 3/8x3/8	1 0 1/2			
	32	f6	BAR 2x3/8	0 10			
	8	f7	D.	1 0			

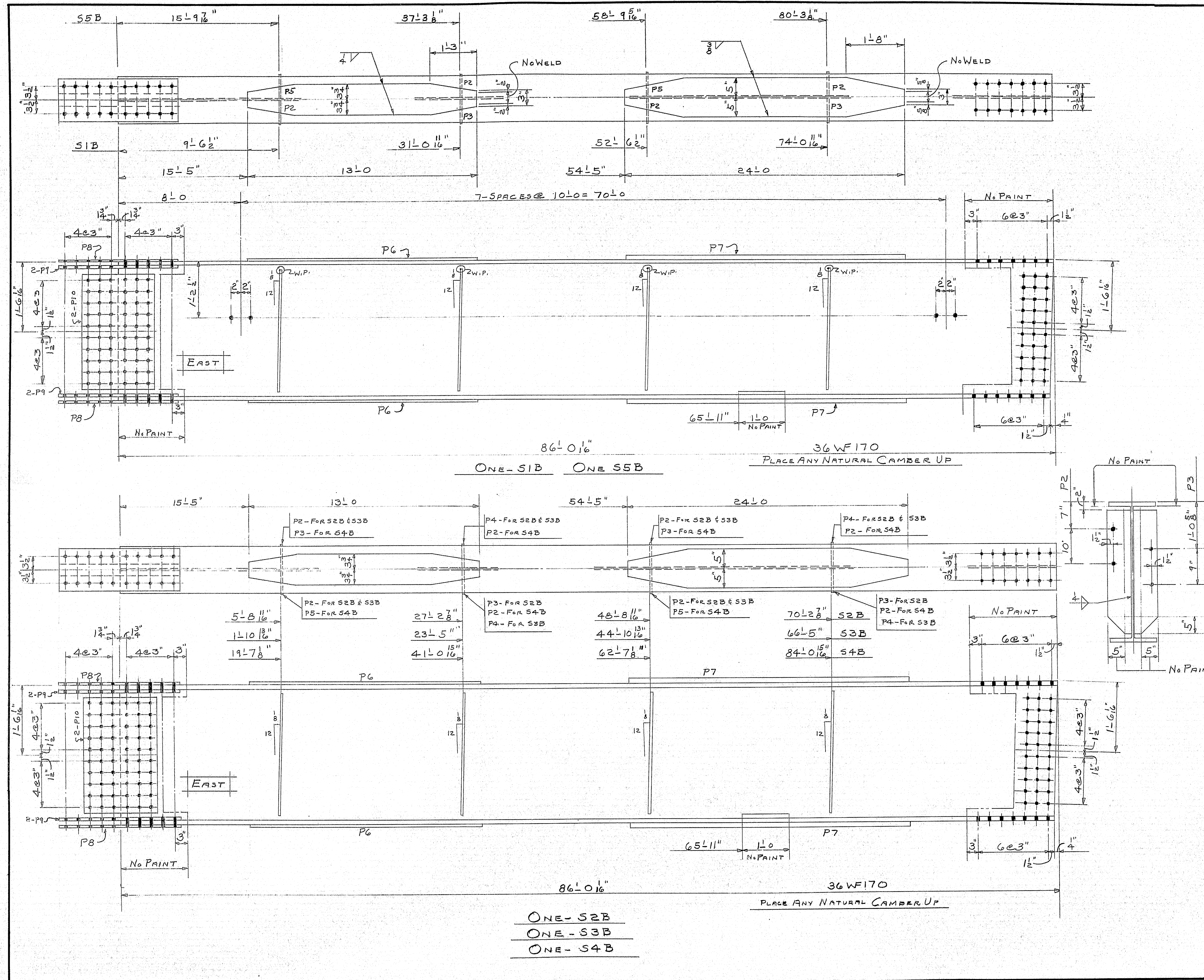
SHOP CONNECTIONS: WELD (E70-LOW HYDROGEN)
FIELD CONNECTIONS:
HOLES:
PAINT: STATE OF MAINE SPEC'S.

APPROVED AS NOTED 7-23-64

SIDEWALK EXPANSION DAMS

PRINT ISSUE		Bancroft & Martin Inc.	
		Brewer, Maine	
		RTE. 43 BRIDGE OVER INT. #95	
		OLD TOWN MAINE	
		CUSTOMER CLANCHETTE BROS. INC.	
		DESIGNER STATE HIGHWAY COMM.	
		ORDER VERBAL	
		DWG. B64-218-53	



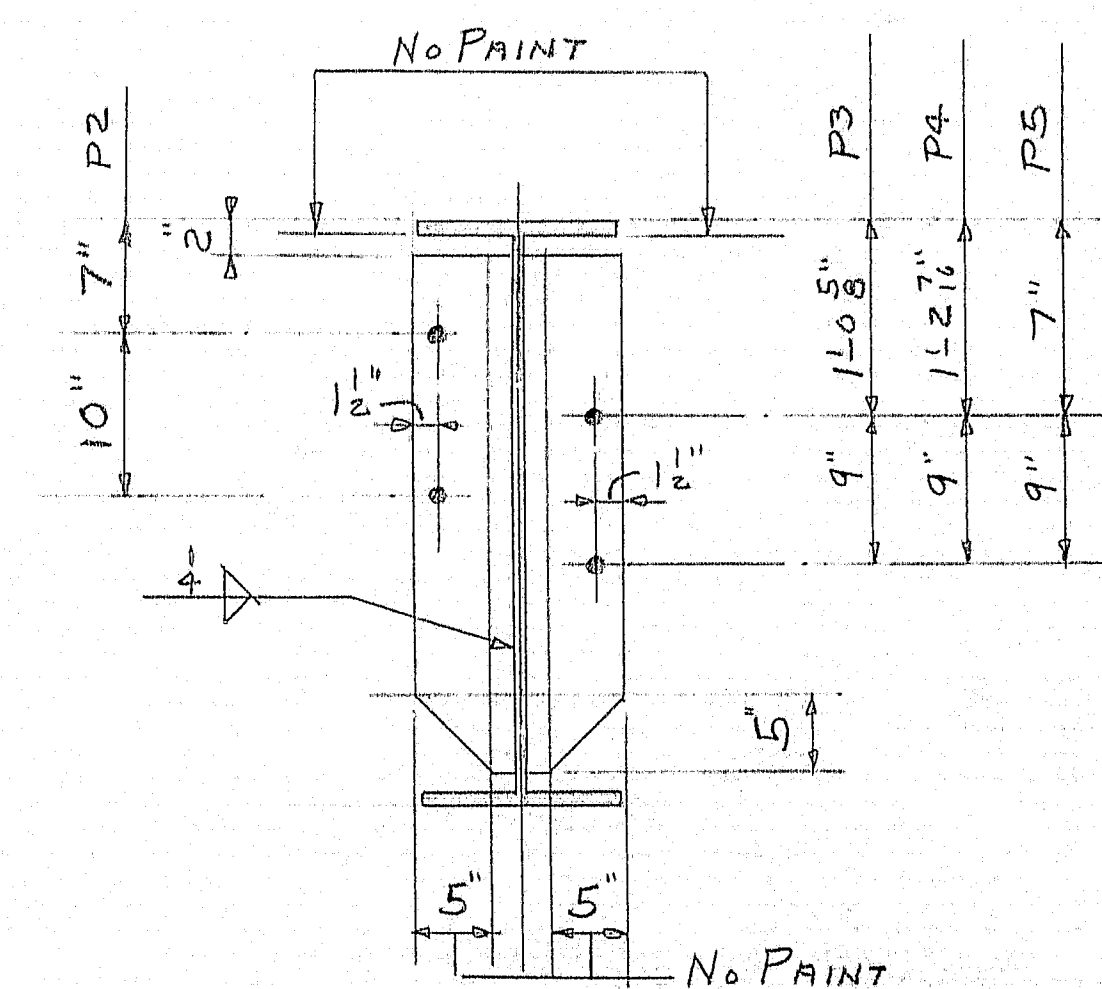
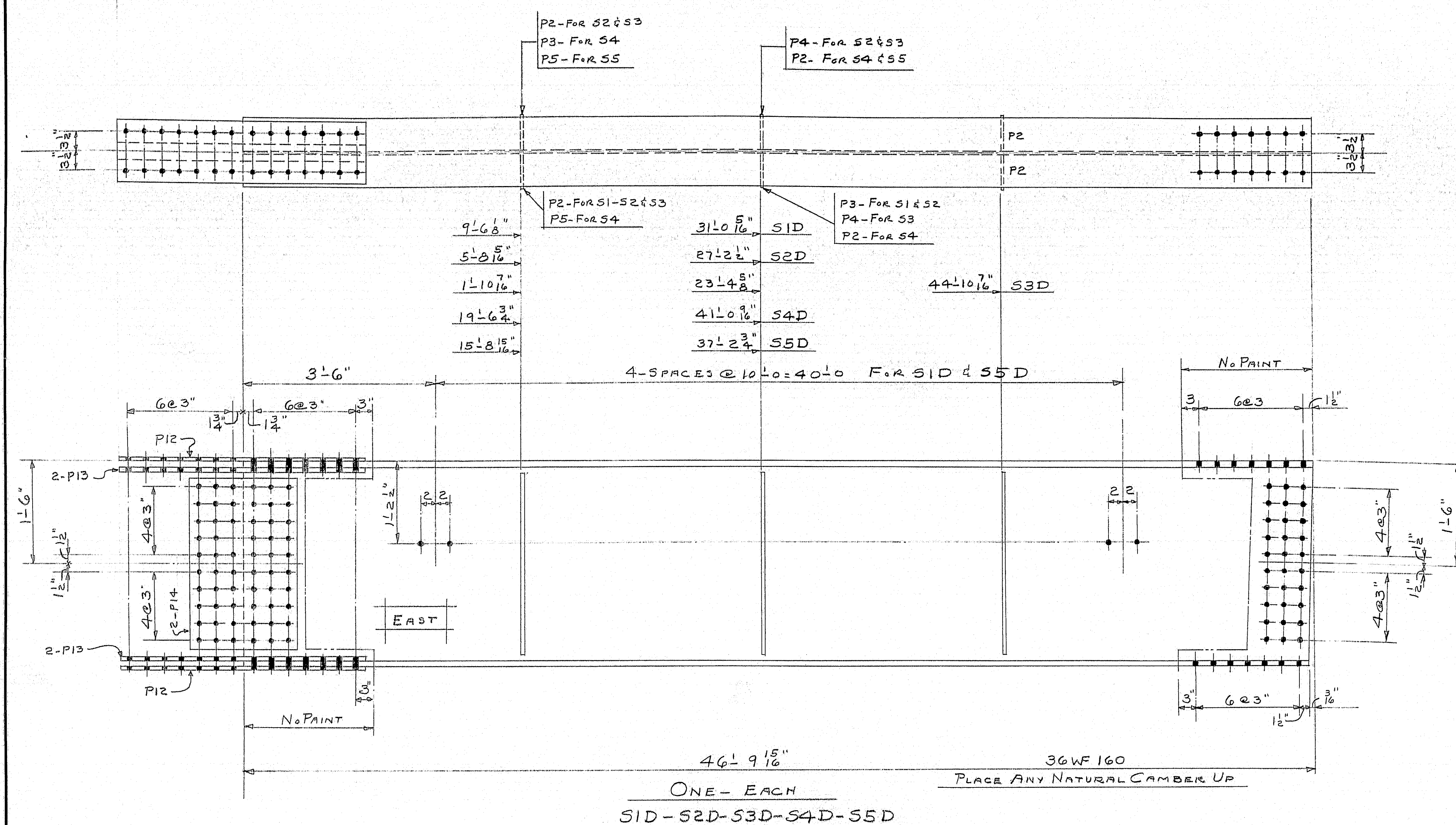


SHIP		BILL OF MATERIAL				DWG. B64-218-55
MARK	NO.	MARK	SHAPE	LENGTH	WT.	REMARKS
S1B	1		36WF170	86' 0 1/16"		
S2B	1		D ₄	86' 0 1/16"		
S3B	1		D ₄	86' 0 1/16"		
S4B	1		D ₄	86' 0 1/16"		
S5B	1		D ₄	86' 0 1/16"		
	10	P6	R7 1/2 x 1 1/2	13' 0"		
	10	P7	R10 x 1 1/4	24' 0"		
	16	P2	R6 x 3/8	2' 7"		
	6	P3	D ₄	2' 7"		
	6	P4	D ₄	2' 7"		
	4	P5	D ₄	2' 7"		
	10	P8	R11 x 1 1/2	2' 6 1/2"		
	20	P9	R4 x 1 1/2	2' 6 1/2"		
	10	P10	R18 x 1 1/2	2' 6"		

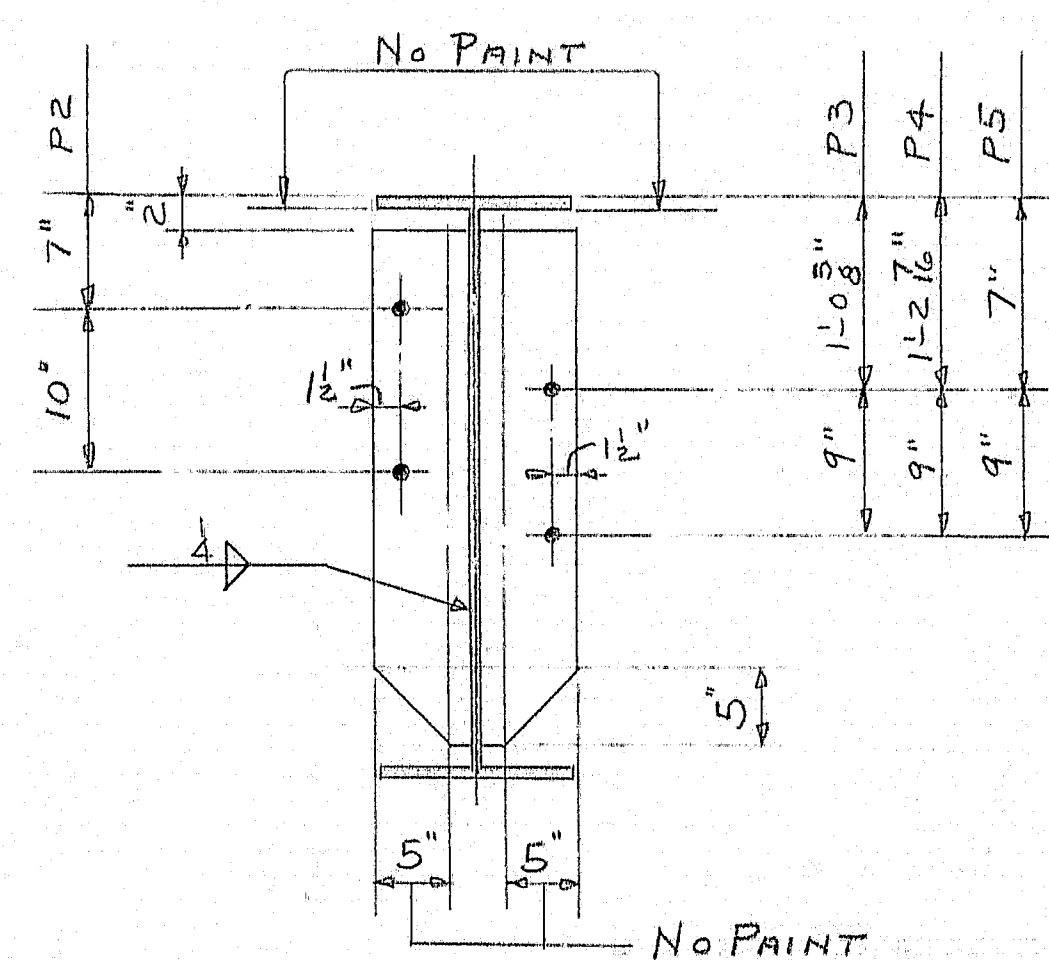
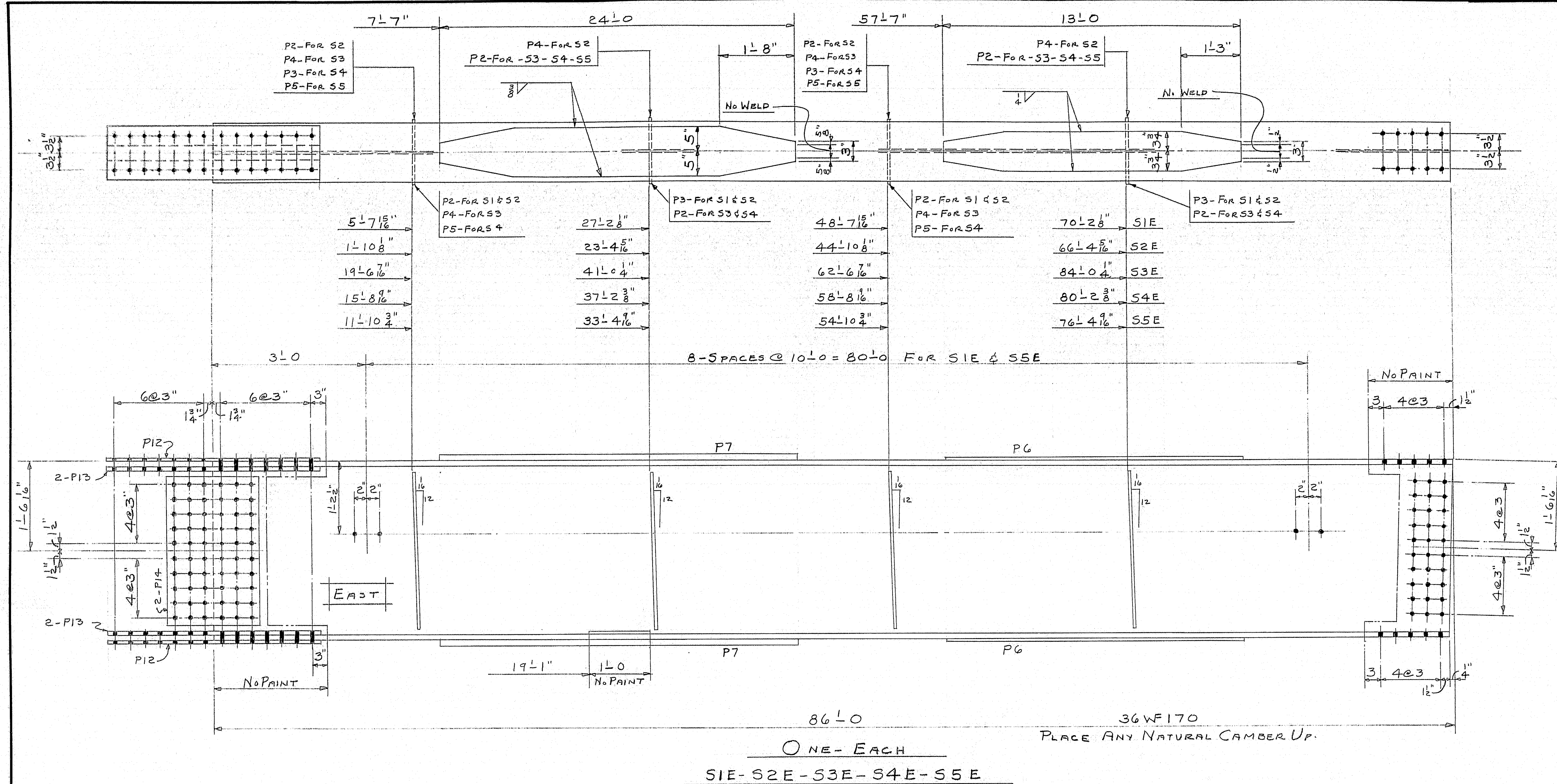
SHOP CONNECTIONS: WELD (SAW-1)
 FIELD CONNECTIONS: 3 H.S. BOLTS
 HOLES: 1/8" φ (SEE DWG. B64-218-E2)
 PAINT: STATE OF ME. SPEC'S.

STRINGERS			SPAN "B"		
PRINT ISSUE			<i>Bancroft & Martin Inc.</i> <i>Brewer, Maine</i> RT. 43 BRIDGE OVER I 95 OLD TOWN MAINE CUSTOMER <u>CLANCHETTE BRIDGE, INC.</u> DESIGNER <u>STATE HIGHWAY COMM.</u>		
2	S.H.C.	9-19-64	ORDER <u>VERBAL</u> DWG. <u>B64-218-55</u>		
3	DIST.	9-19-64			
5	SHOP	9-19-64			
2	F.A.	9-3-64			
DRAWN	8-31-64	D.C.			
REVISION					
REVISION					
REVISION					

95-27

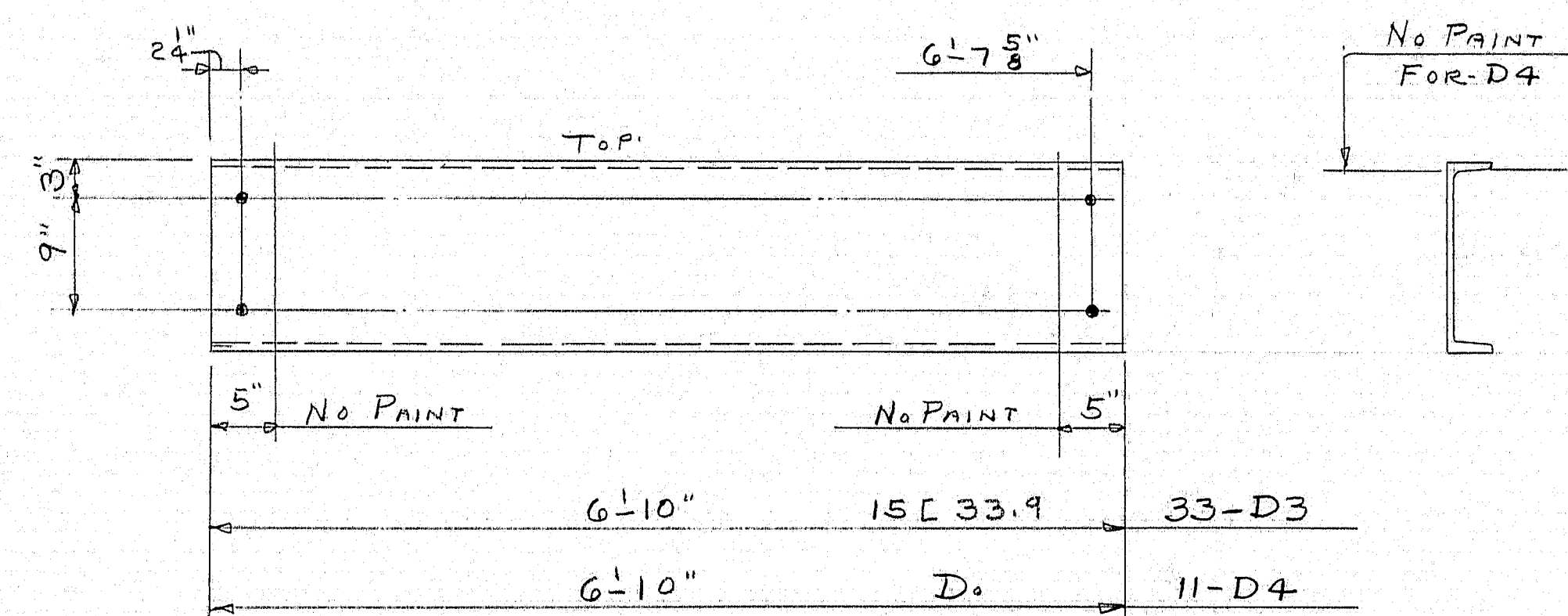
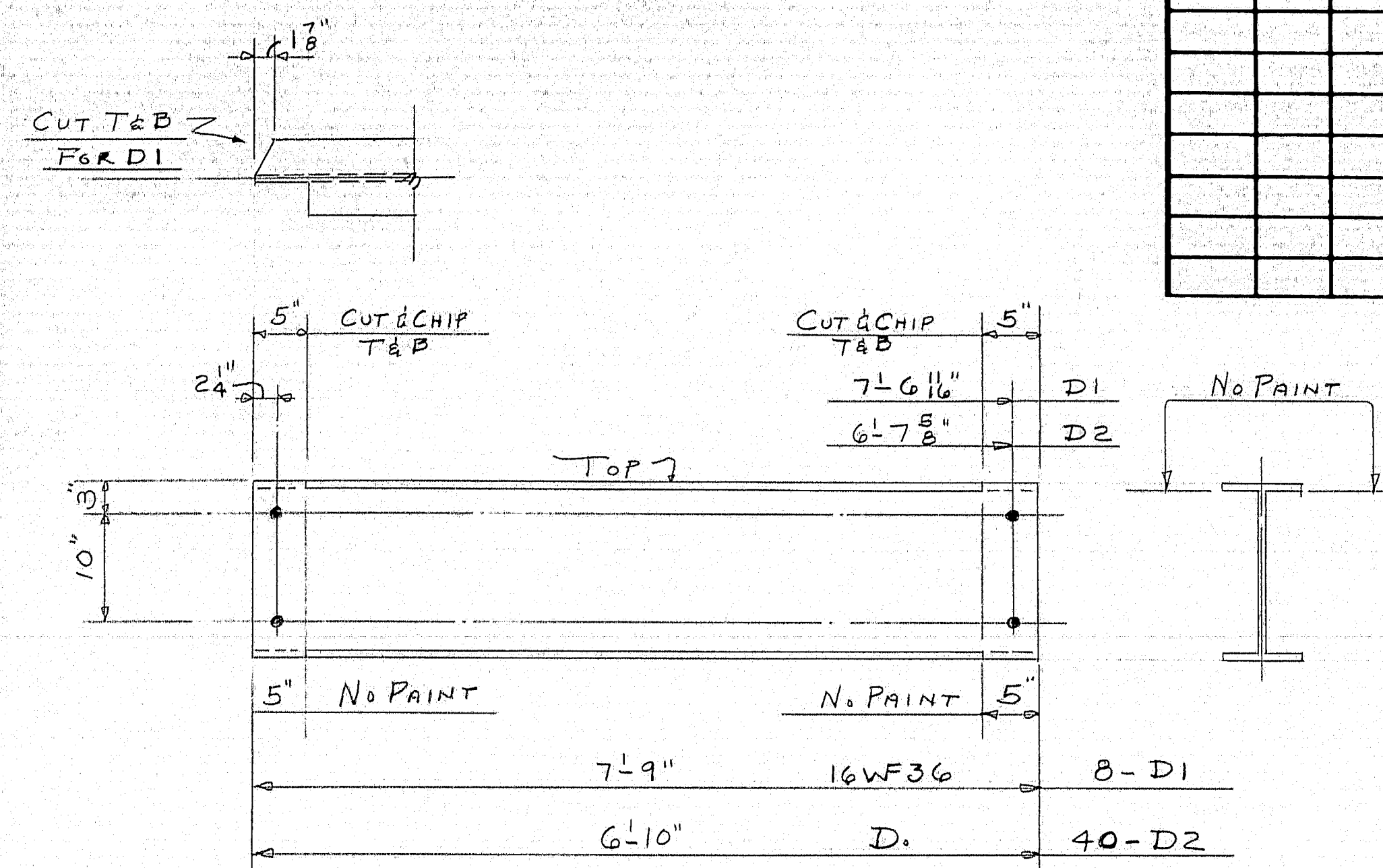


SHOP CONNECTIONS: WELD (SAW-1)
FIELD CONNECTIONS: 3 H.S. BOLTS
HOLES: 1 1/2" ϕ (SEE DWG. BG4-21B-EZ)
PAINT: STATE OF ME. SPEC'S.



SHOP CONNECTIONS: WELD (SAW-1)
FIELD CONNECTIONS: 3 H.S. BOLTS
HOLES: $1\frac{5}{8} \phi$ (SEE DW'G. B64-218-EZ)
PAINT: STATE OF ME, SPEC'S.

STRINGERS			SPAN "E"		
PRINT ISSUE			<i>Bancroft & Martin Inc.</i> <i>Brewer, Maine</i> Rt 43 BRIDGE OVER I 95 OLD TOWN MAINE		
2	5 H.C.	9-19-64	CUSTOMER <u>CIANCHETTE BRO'S. INC.</u> DESIGNER <u>STATE HIGHWAY COMM.</u>		
3	Dist.	9-19-64			
5	5 H.P	9-19-64			
2	F.A.	9-2-64			
DRAWN 9-2-64		D.C.	ORDER <u>VERBAL</u> DWG. <u>B64-218-58</u>		
REVISION					
REVISION					
REVISION					

[illegible]

SHOP CONNECTIONS:
FIELD CONNECTIONS: WELD
HOLES: 15" Ø
PAINT: STATE OF ME. SPEC'S.

DIAPHRAGMS		
PRINT ISSUE		
2	S.H.C.	9-19-64
3	D.S.T.	9-19-64
5	S.H.O.P.	9-19-64
2	F.B.I.	9-3-64
DRAWN	9-3-64	D.C.
REVISION		
REVISION		
REVISION		

Bancroft & Martin Rolling Mills Company
Brewer, Maine

RT. 43 BRIDGE OVER I 95
 OLD TOWN MAINE

CUSTOMER CIANCHETTE BROS. INC.
 DESIGNER STATE HIGHWAY COMM.

ORDER VERBAL DWG. B64-218-510

